

**SAKARYA BÜYÜKŞEHİR  
BELEDİYESİ 1000 KİŞİLİK  
PORTATİF ÇELİK  
KONGRE MERKEZİ**

**2023**

















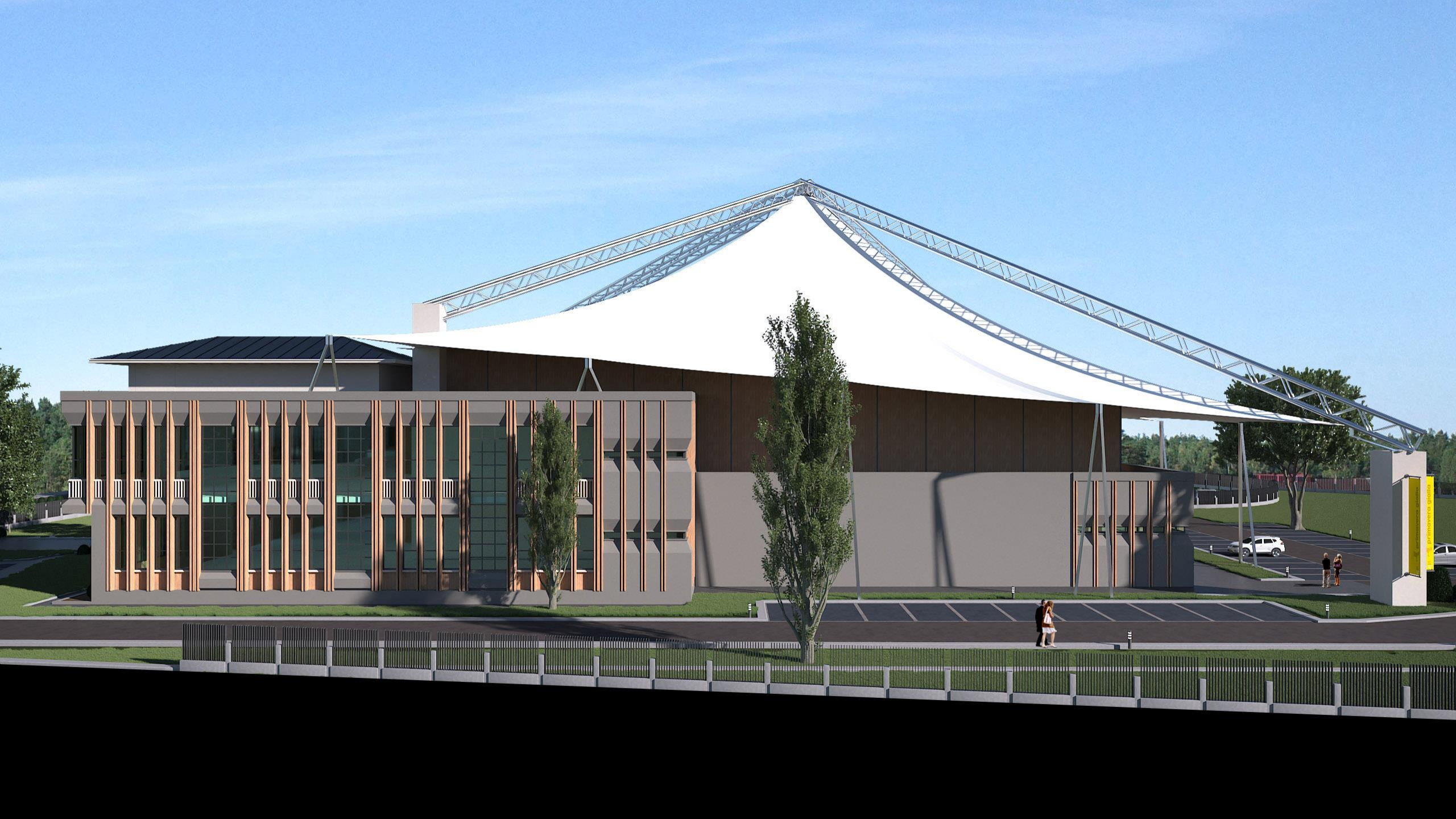




олимпиада 2014

олимпиада 2014

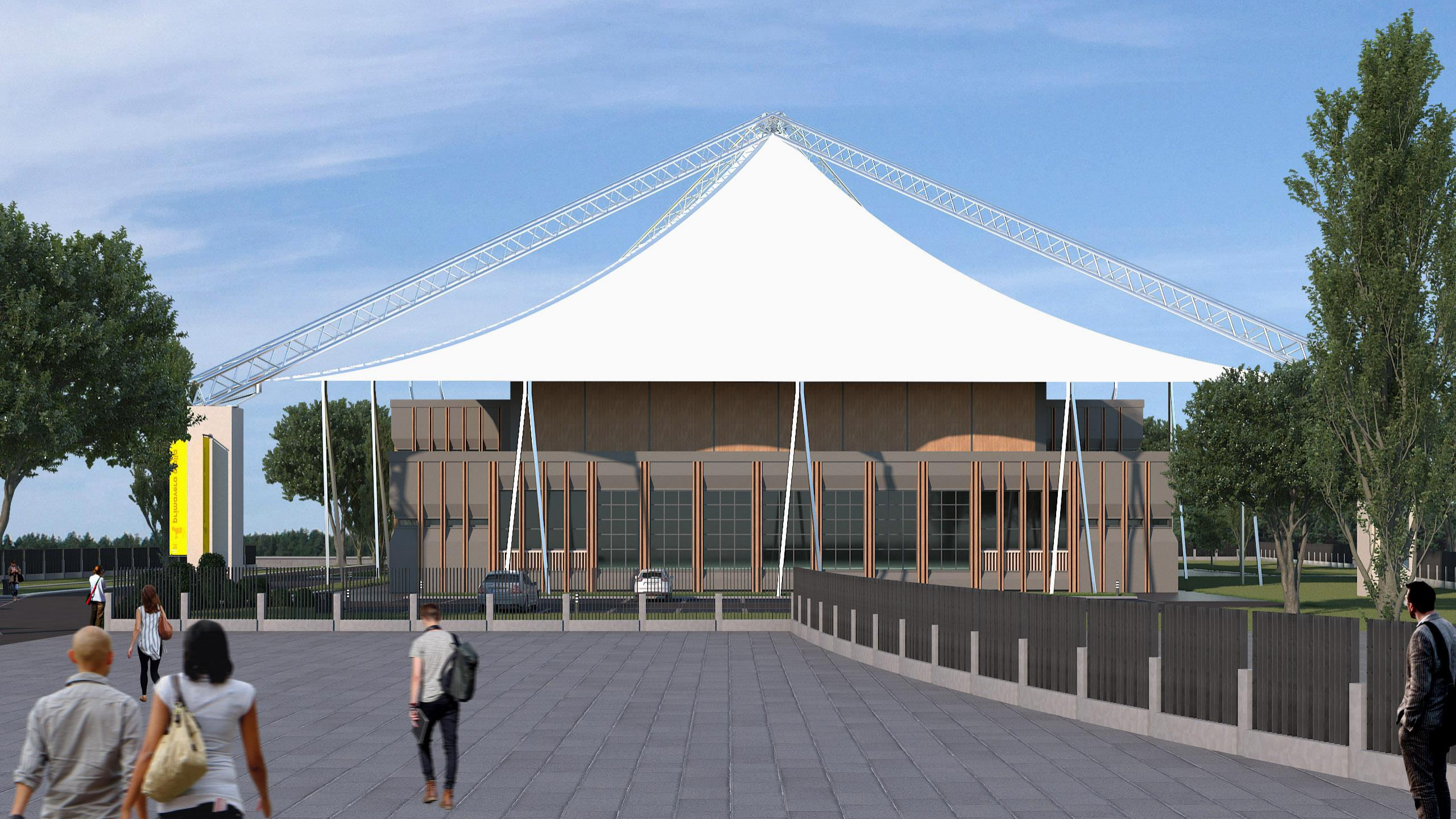
















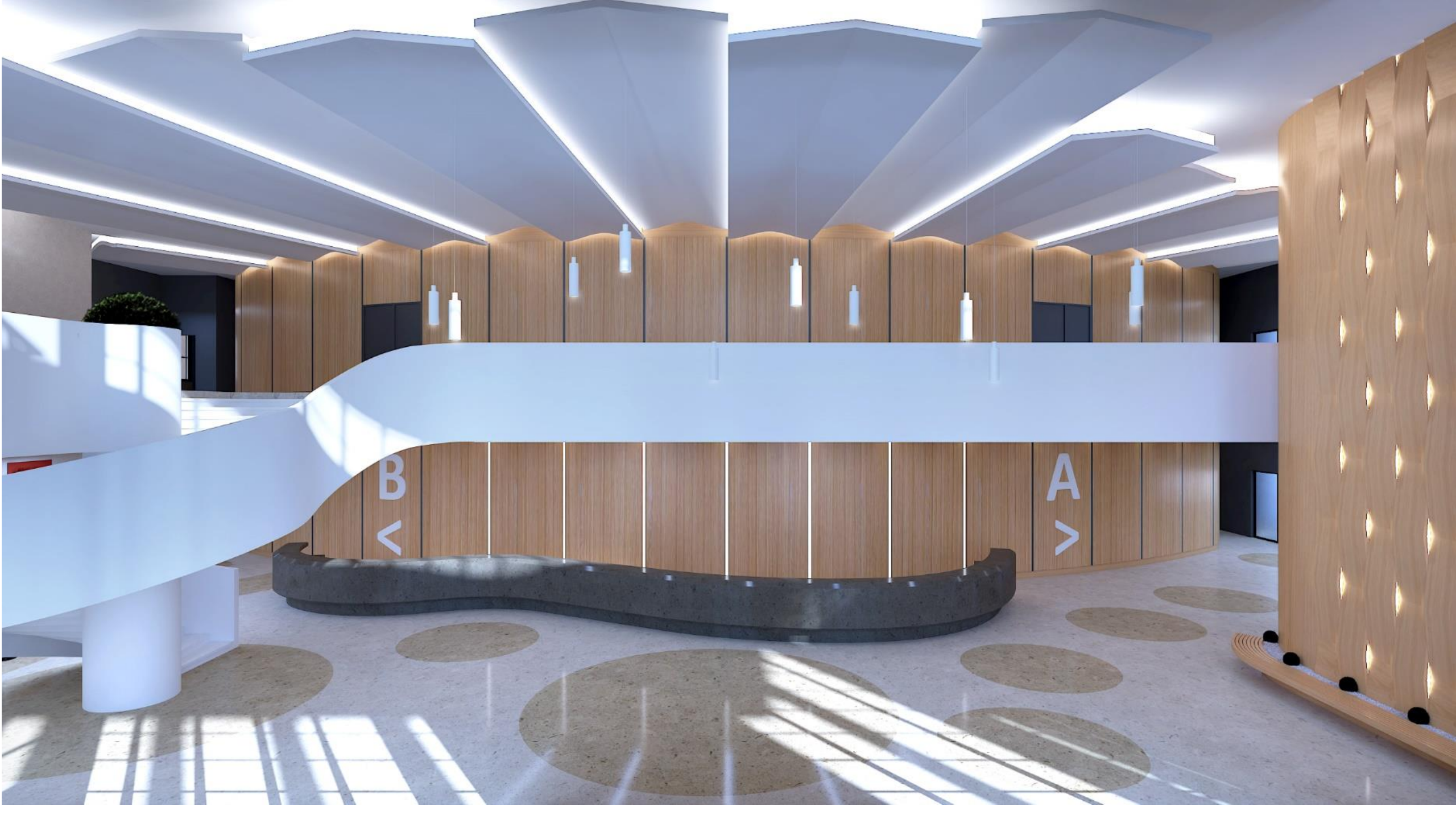






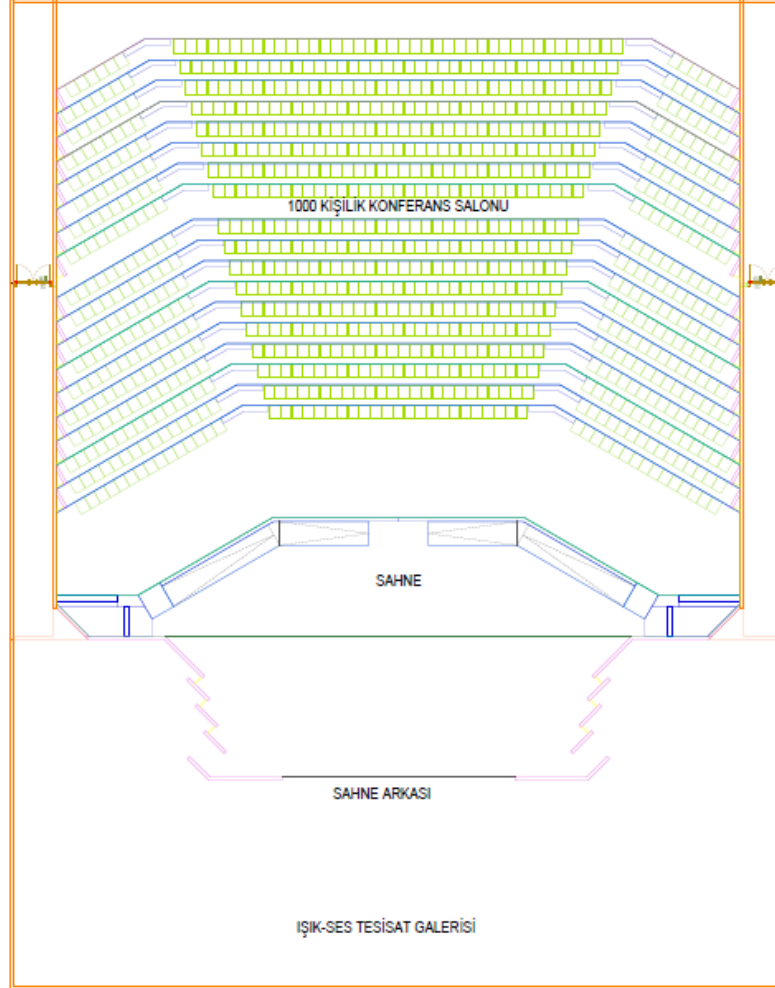




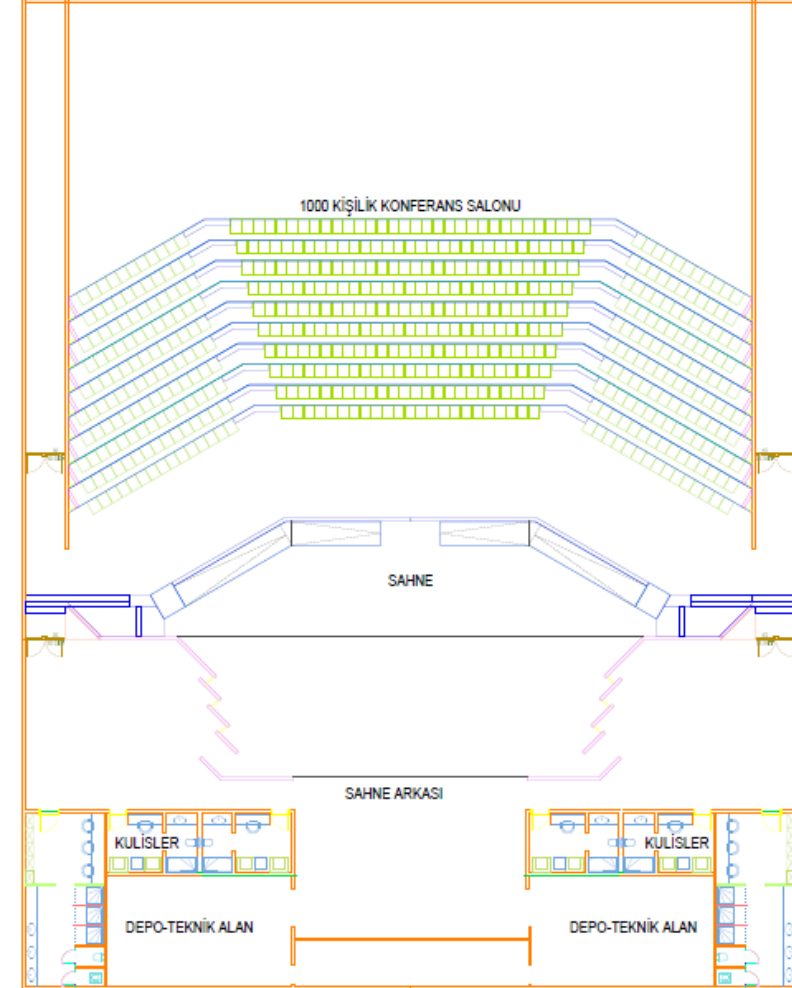




# ÇADIR ALTINDA KALAN YAPI

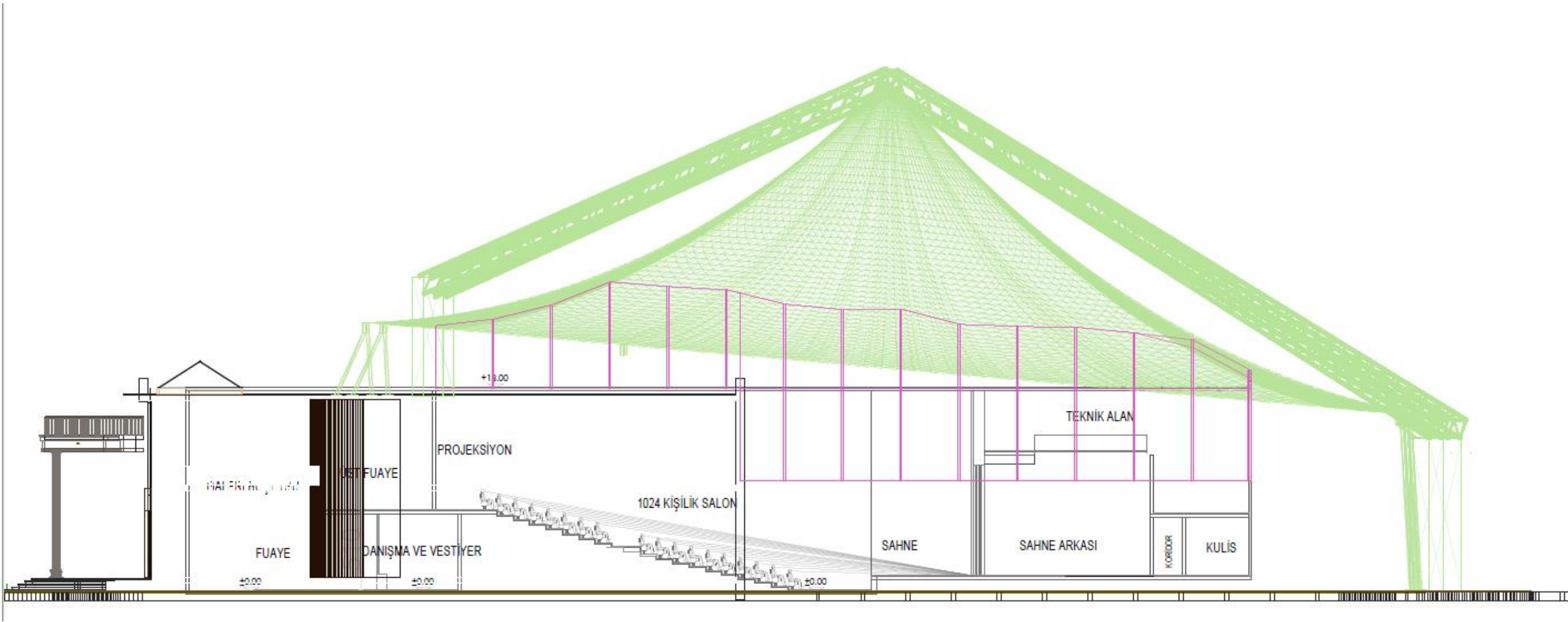


ÜST KAT PLANI



ZEMİN KAT PLANI





BAK EKİMLERİ

FUAYE

±0.00

1024 KİŞİLİK SALON

DANIŞMA VE VESTİYER

±0.00

PROJEKSİYON

+19.00

1024 KİŞİLİK SALON

SAHNE

SAHNE ARKASI

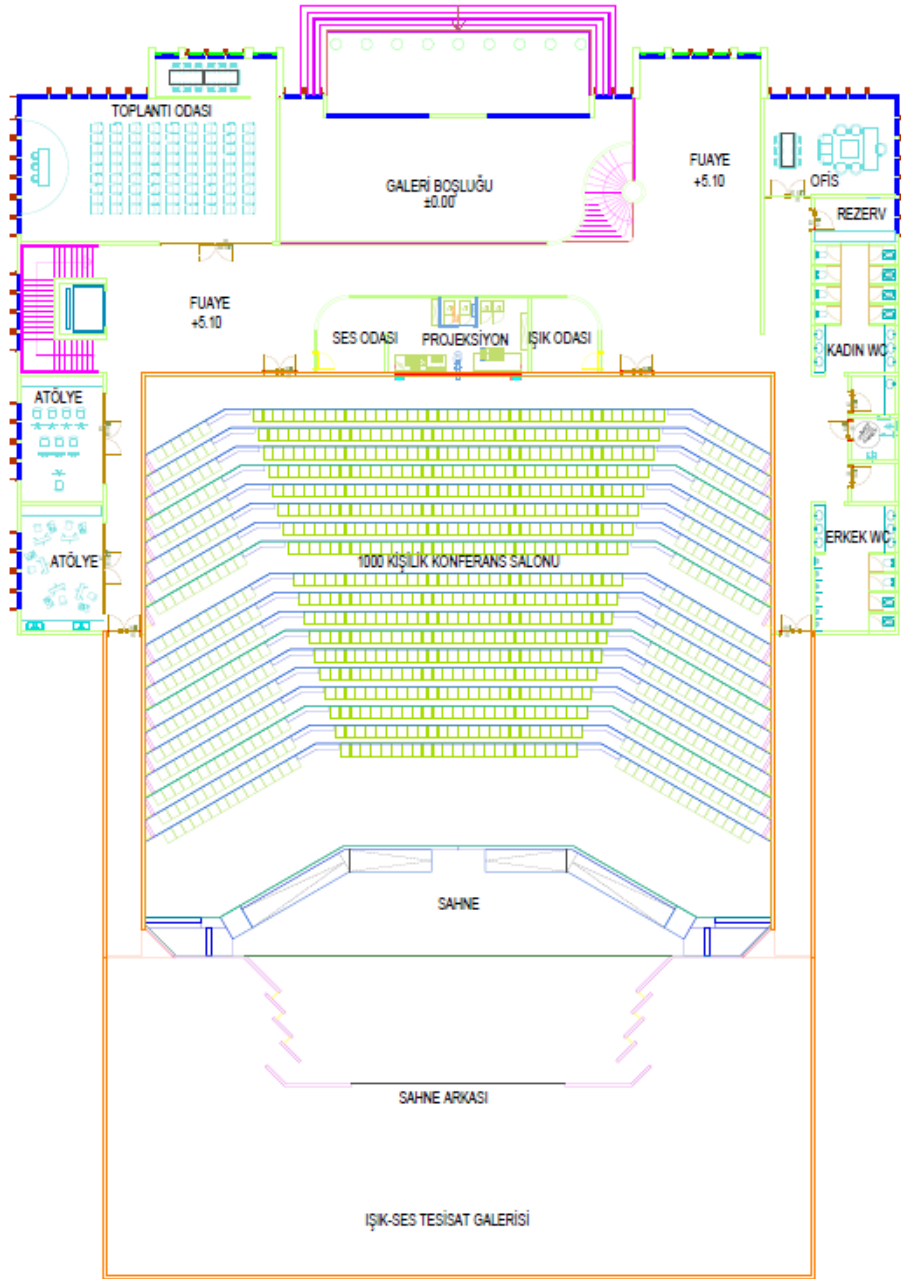
TEKNİK ALAN

KORİDÖR

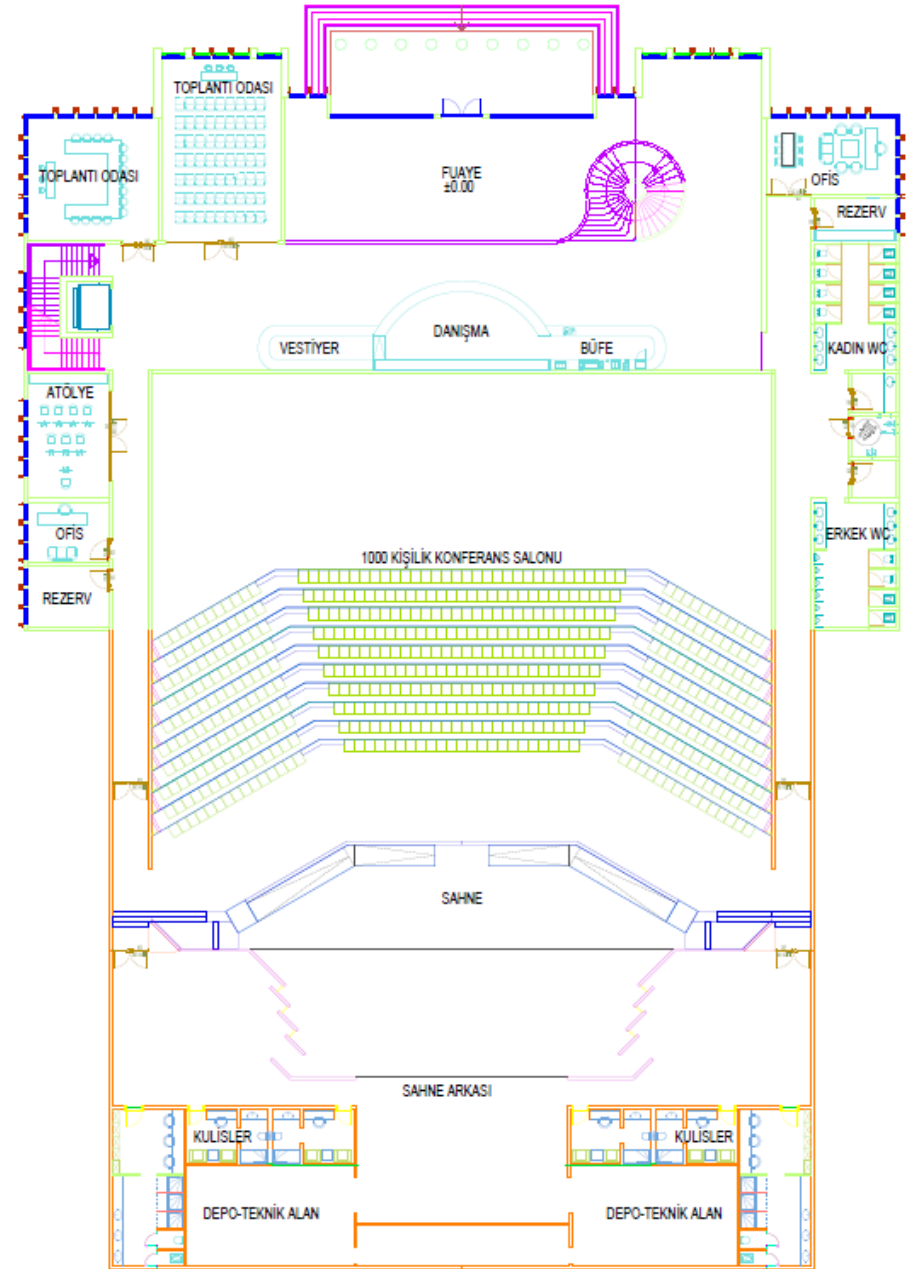
KULİS

±0.00



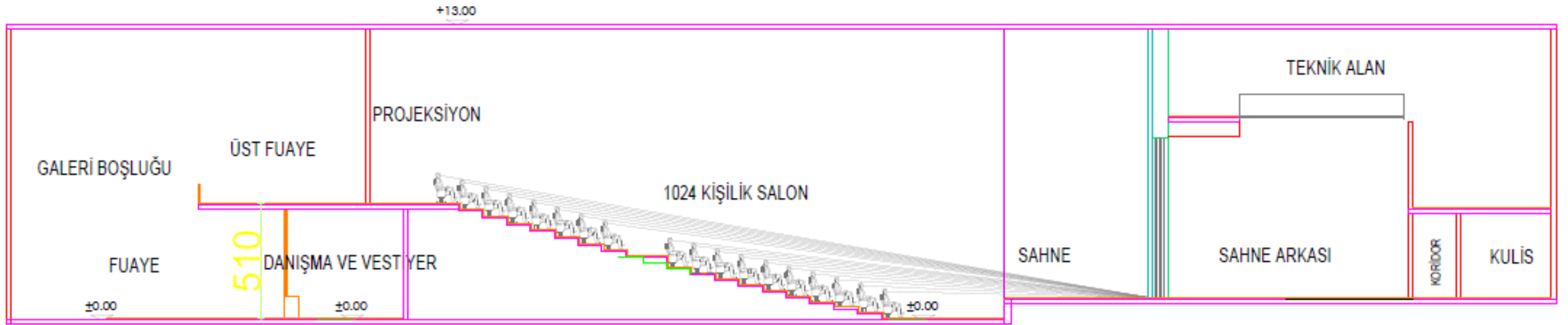


ÜST KAT PLANI



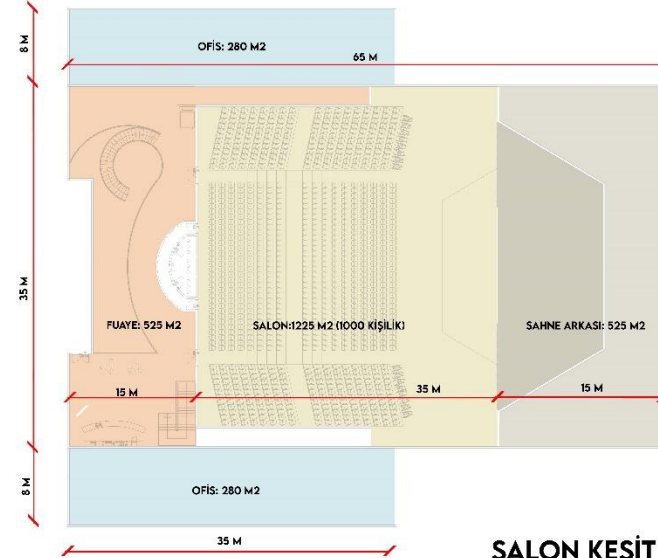
ZEMİN KAT PLANI







## PLAN ŞEMASI



OFIS BLOĞU SAĞ:  
280 M2 X 2(KAT) = 540 M2

OFIS BLOĞU SOL:  
280 M2 X 2(KAT) = 540 M2

FUAYE:

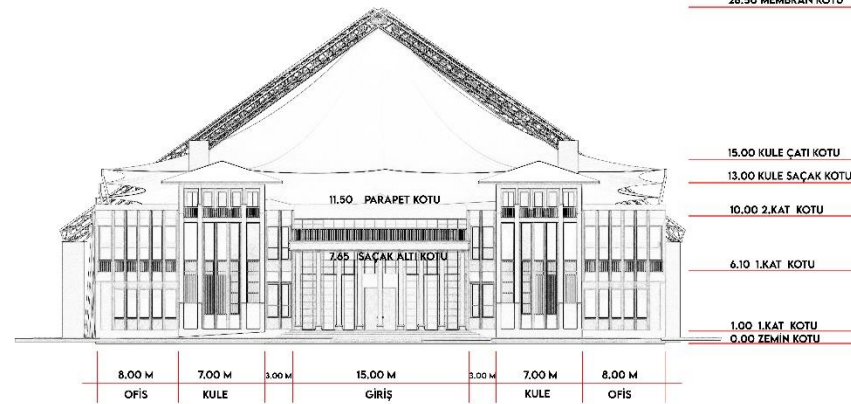
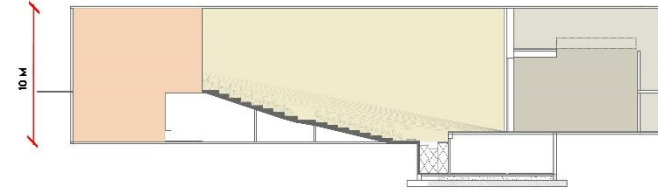
ZEMİN KAT: 525 M2  
1. KAT: 250 M2

KONFERANS SALONU: 1225 M2

SAHNE ARKASI: 525 M2

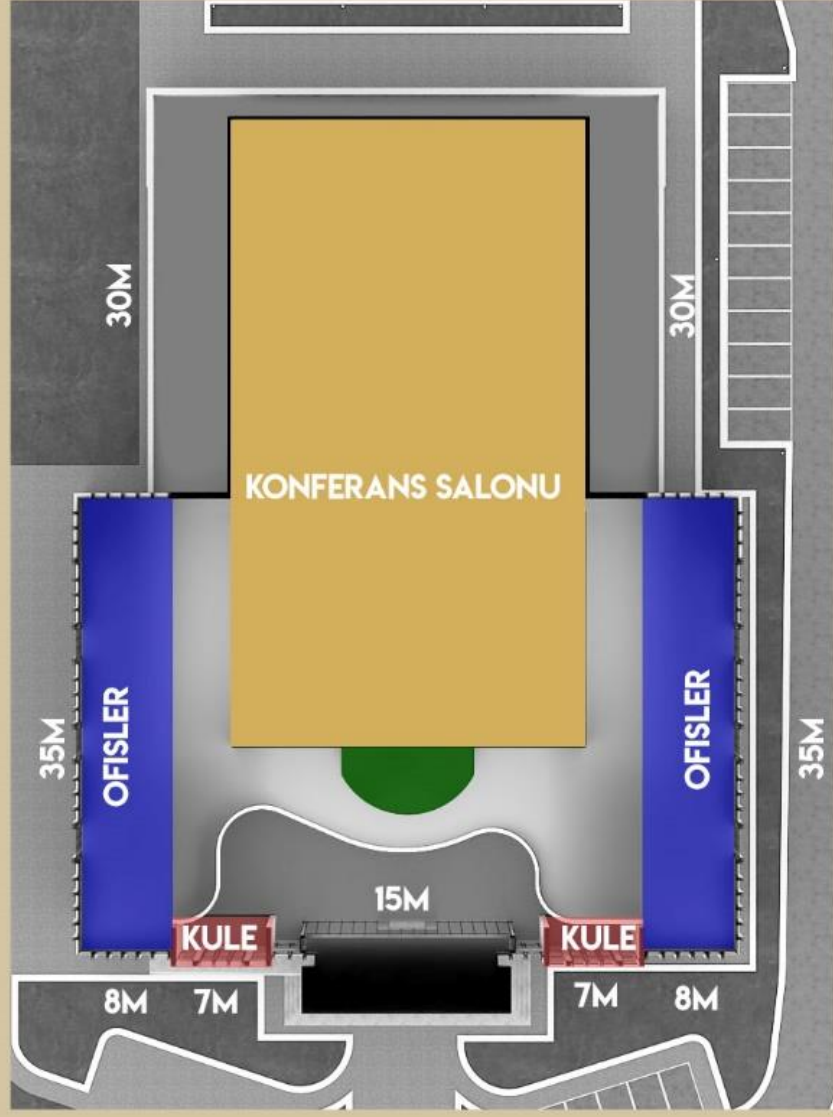
**TOPLAM ALAN:**  
**3605 M2**

## SALON KESİTİ



## CEPHE







51 M GENİŞLİK X 11 M YÜKSEKLİK= 561 M<sup>2</sup>

KULELER İÇİN (+1 KAT) = 7 M X 3M = 21 M<sup>2</sup> X 2= 42 M<sup>2</sup>

GENEL TOPLAM: 603 M<sup>2</sup>

28.50 MEMBRAN KOTU

15.00 KULE ÇATI KOTU

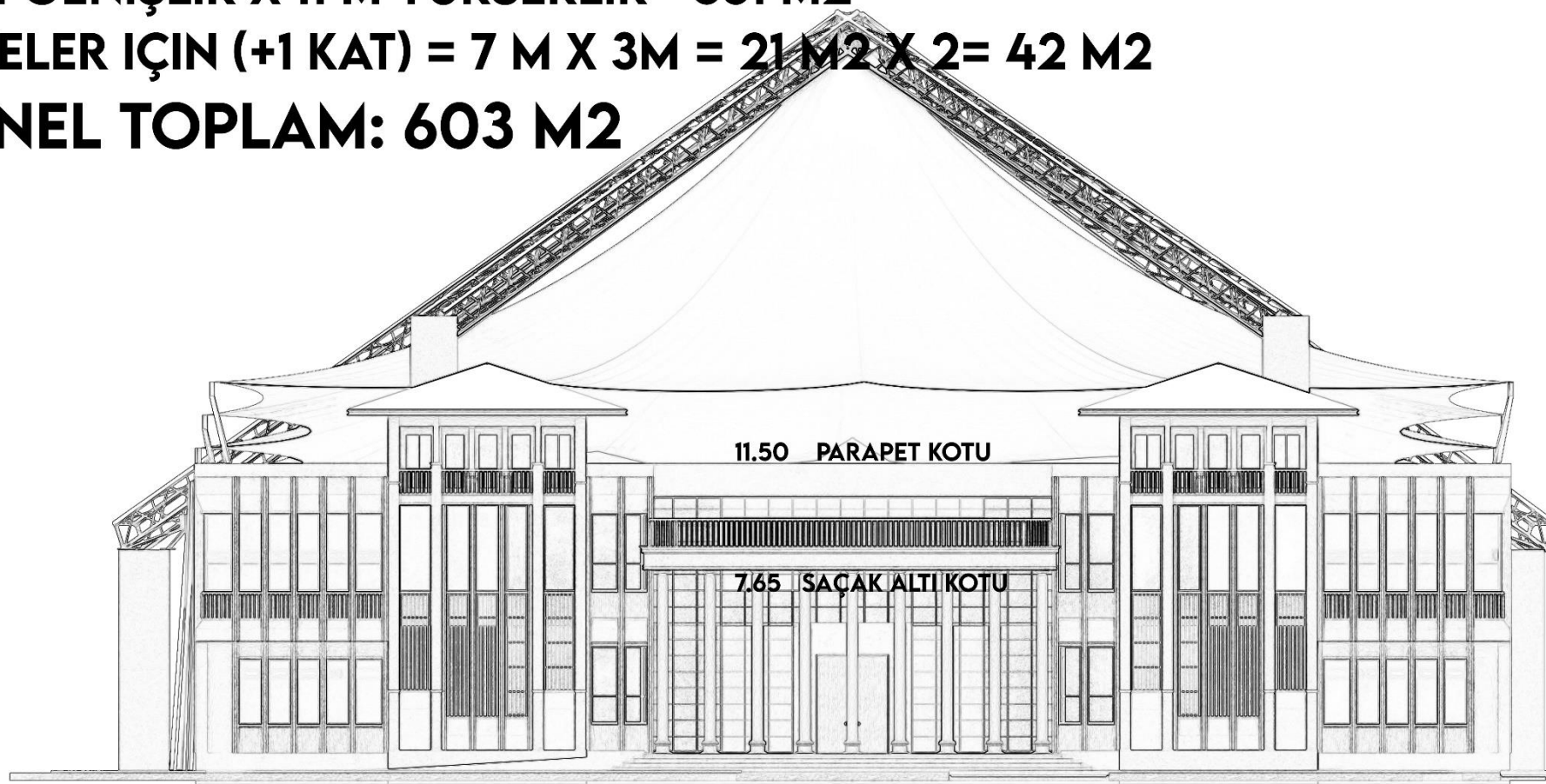
13.00 KULE SAÇAK KOTU

10.00 2.KAT KOTU

6.10 1.KAT KOTU

1.00 1.KAT KOTU

0.00 ZEMİN KOTU



11.50 PARAPET KOTU

7.65 SAÇAK ALTI KOTU

8.00 M

OFİS

7.00 M

KULE

3.00 M

15.00 M

GİRİŞ

3.00 M

7.00 M

KULE

8.00 M

OFİS

CEPHE



**TAMAMI ÇELİK & ALUMİNYUM  
MODÜLER YAPI SİSTEMLİ  
PROJE + ÜRETİM + NAKLİYE + MONTAJ  
240 GÜN**

*\* Sadece temelde beton kullanılmıştır.*